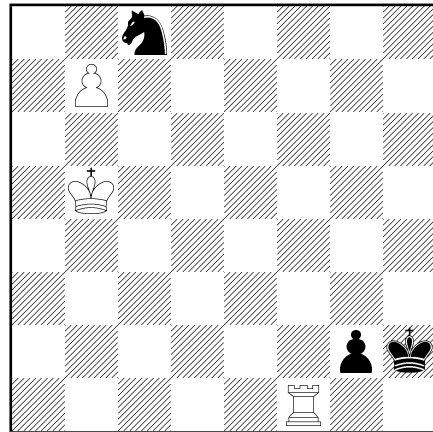
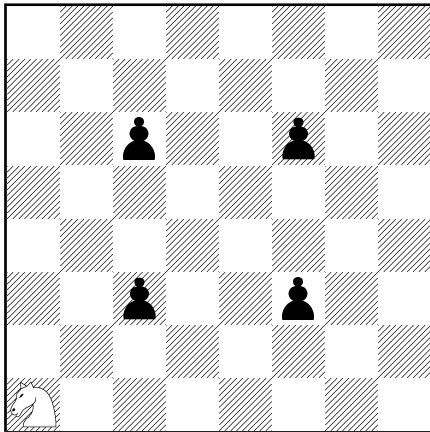


Comprehensive Chess Course,
Volume II
Lesson 1 Homework
(Answers are in the book.)

I. Diagrams 23-30

24

23



Only White moves. Write down the route that the Knight must take to visit the other three corners and then come back. In doing so, the Knight must not put itself under attack by any of the Black pawns, nor must it capture any of the pawns, nor must it land on any square more than once.

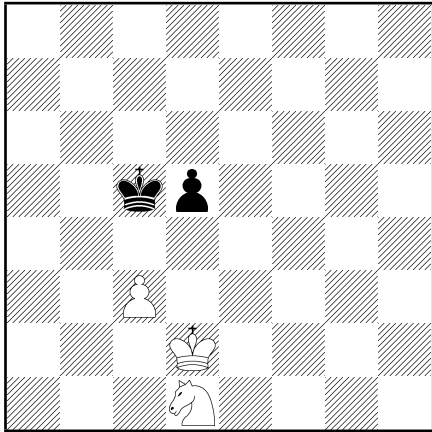
Write your answer

How should the game end

- a) with White to move?
- b) with Black to move?

Write your answer

25



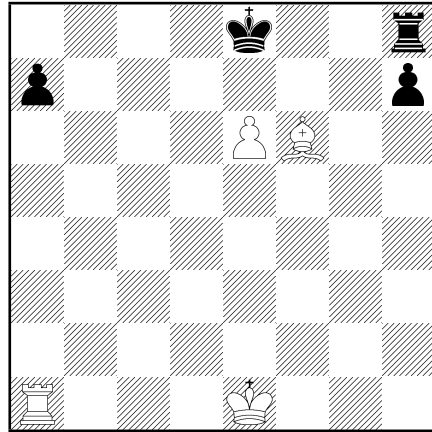
How should the game end

a) with Black to move?

b) with White to move?

Write your answer

26

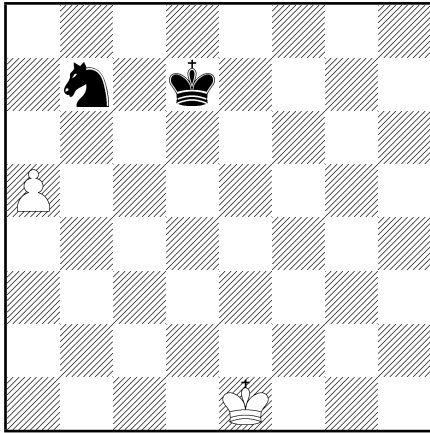


White to play and mate in two moves (the Rooks and Kings have not yet moved in the game).

Write your answer

	WHITE	BLACK
1.		
2.		
3.		

27

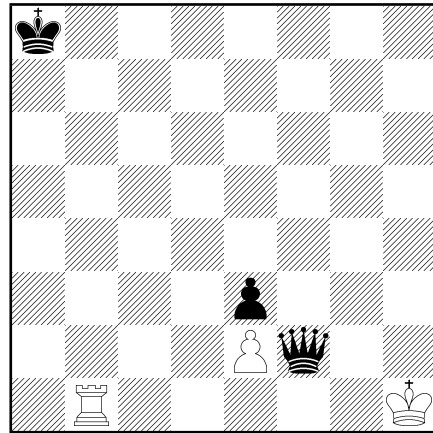


Write your answer

White to play and win.

Write your answer

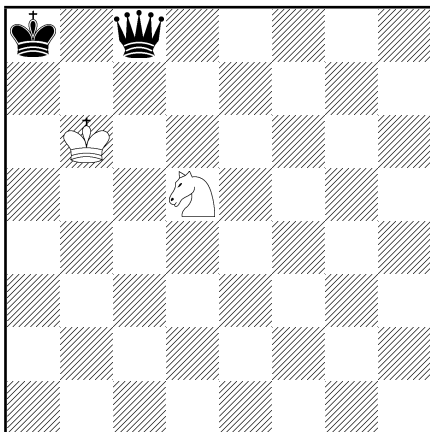
29



White to play and draw.

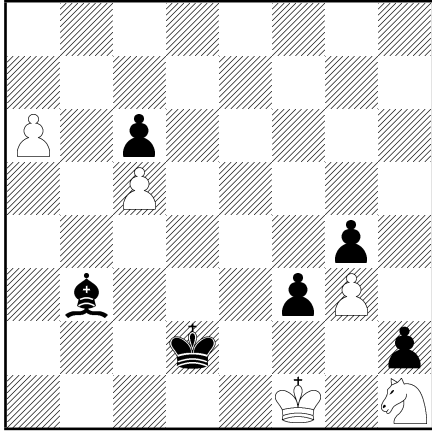
Write your answer

28



White to play. How should the game end?

30



Black to play. How should the game end?

Write your answer

II. Board Study Exercises

Write down your answers in the space below.

1. Place the board so that you are playing White. Find the squares d4, f7, and c3.
2. Looking at the board from Black's side, find the squares c6, h2, d3, and a5.

Answer questions 3-5 without looking at a board.

3. What color are the following squares: c3, h5, d6, b4.

4. Name all the squares making up the h2-b8 and d1-h5 diagonals.

5. Name the diagonals running through d5. Name the squares making up these diagonals.
