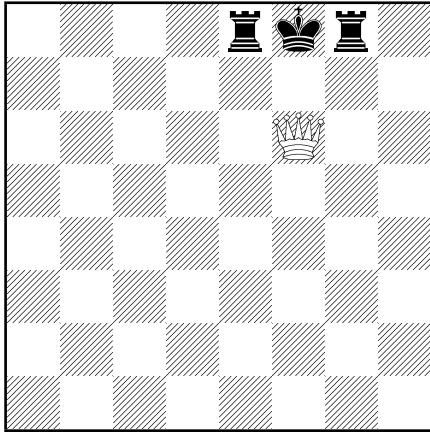


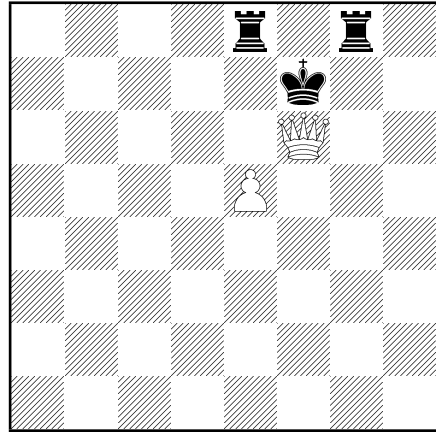
Comprehensive Chess Course, Volume II
Lesson 11 Homework - The Typical Mating Patterns

(Study the patterns and make up two-move mating combinations of your own using them.)

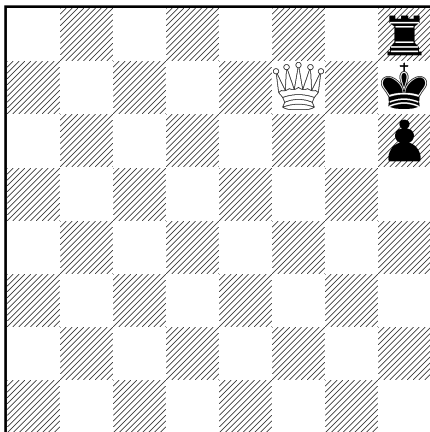
566



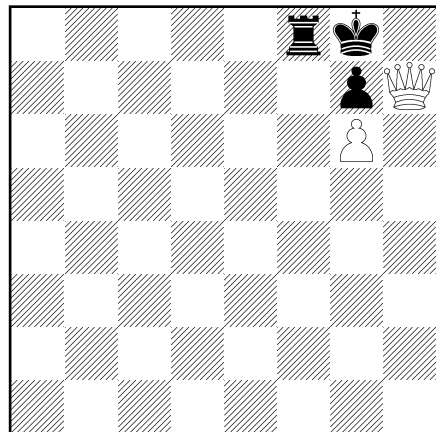
569



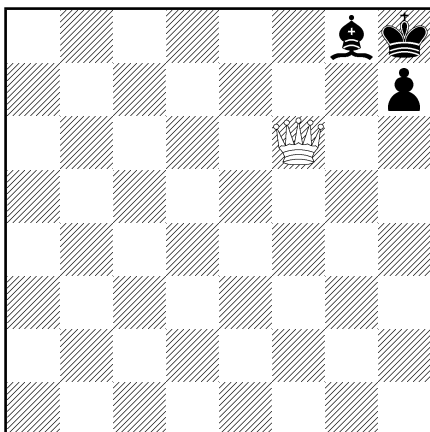
567



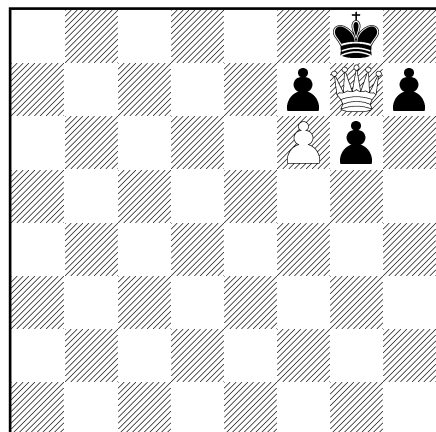
570



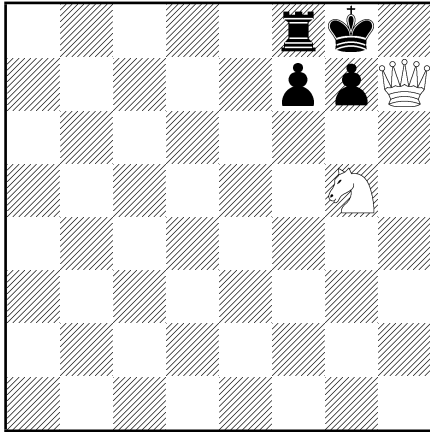
568



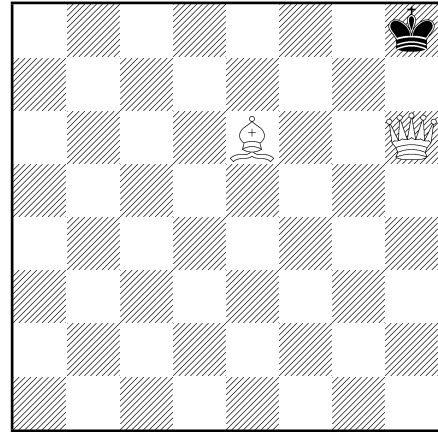
571



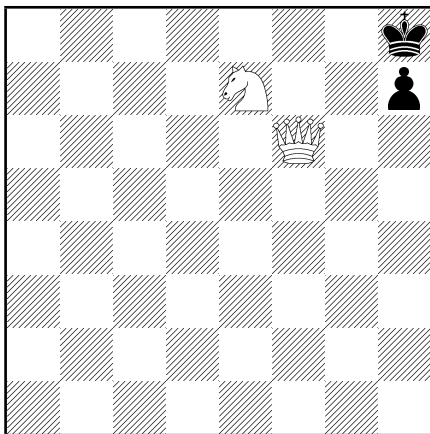
572



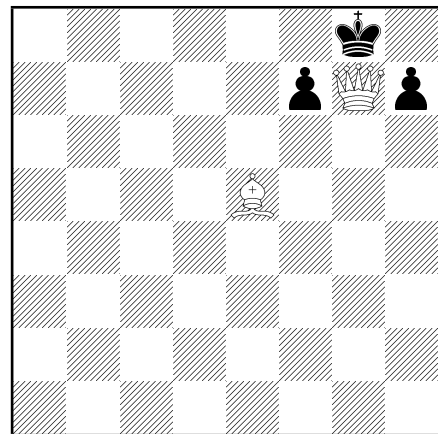
575



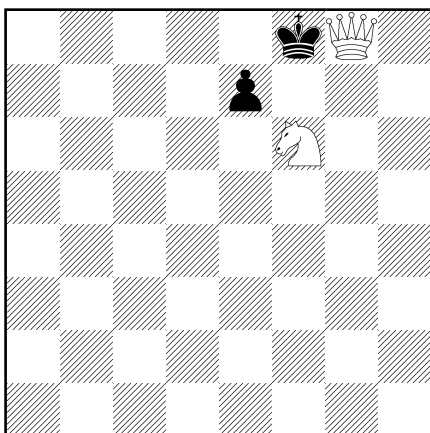
573



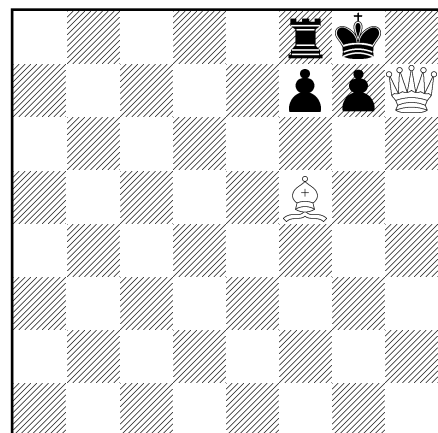
576



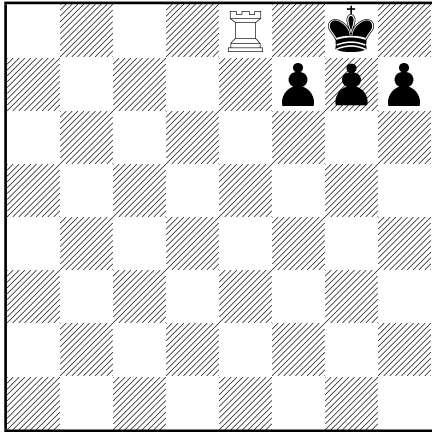
574



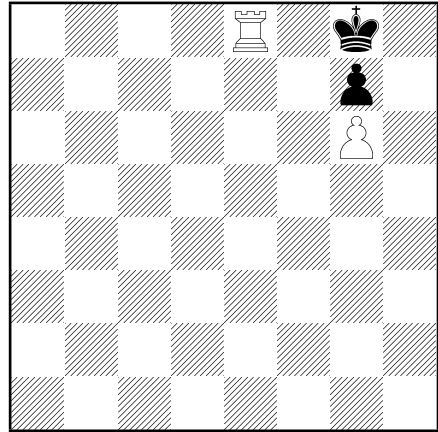
577



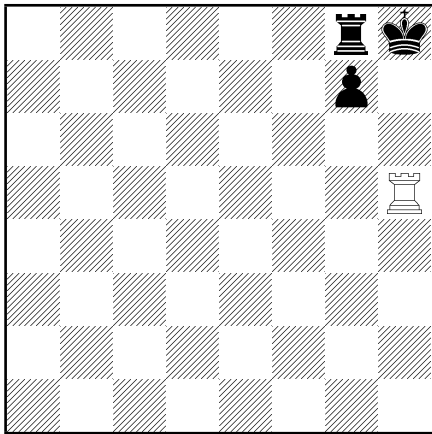
578



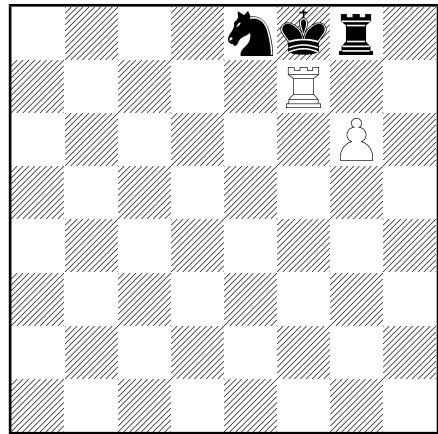
581



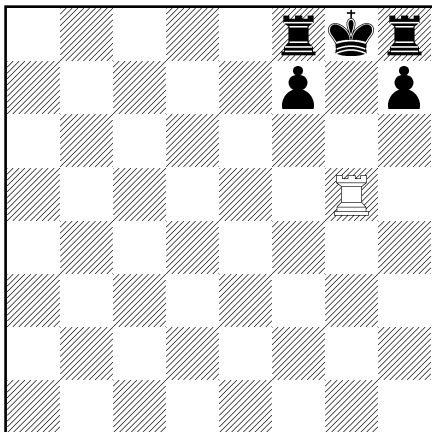
579



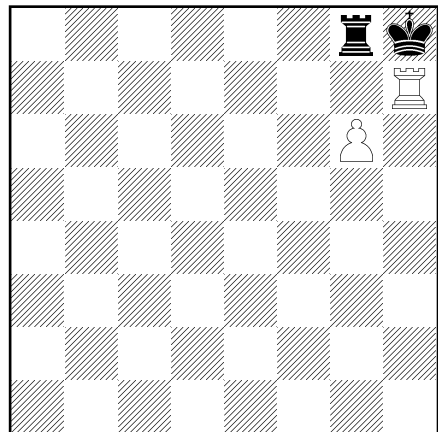
582



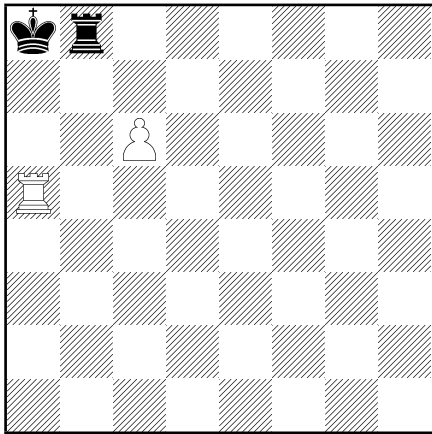
580



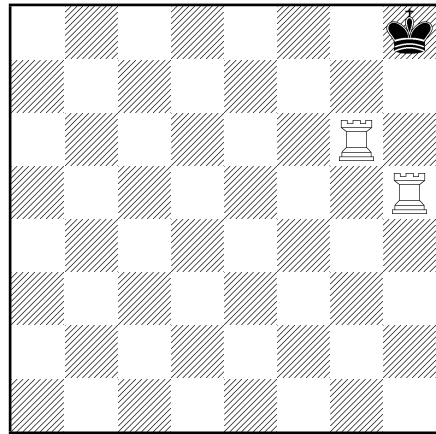
583



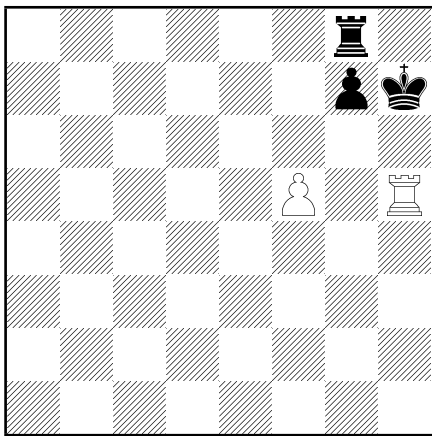
584



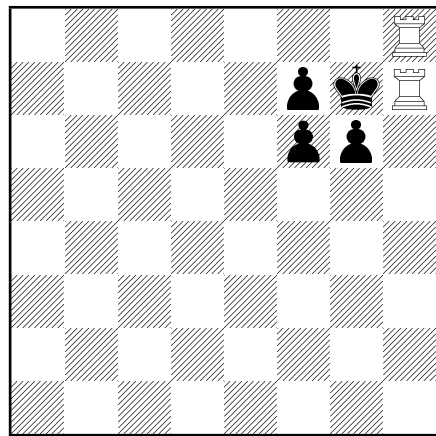
587



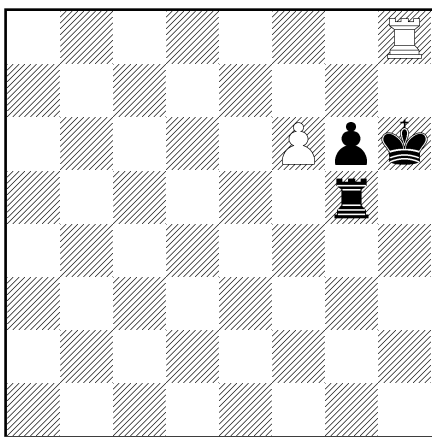
585



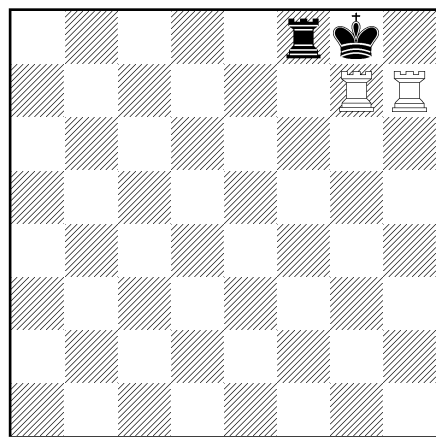
588



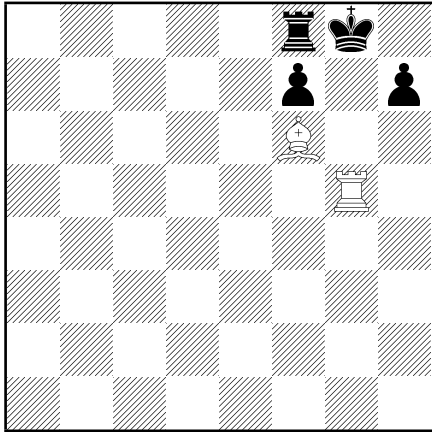
586



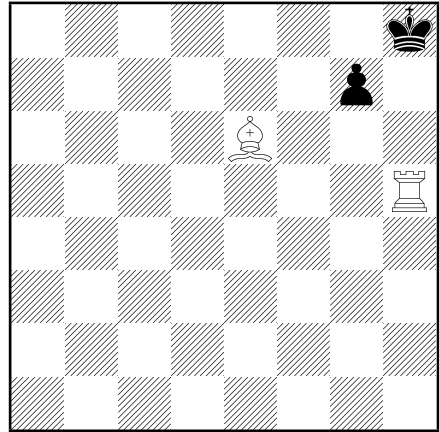
589



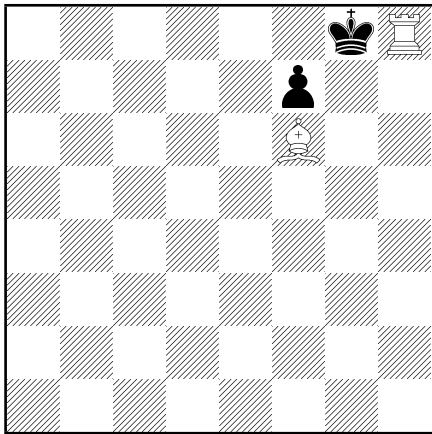
590



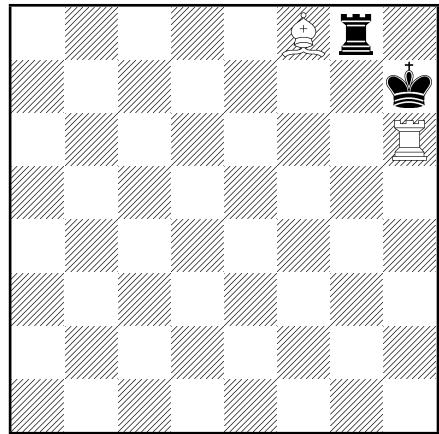
593



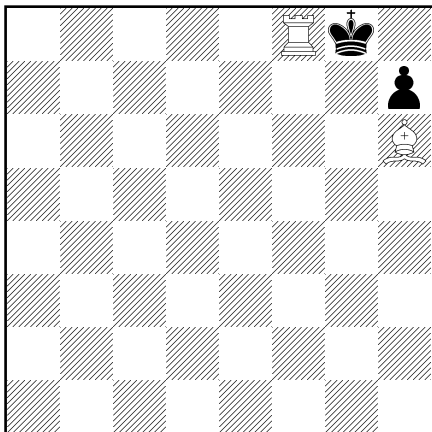
591



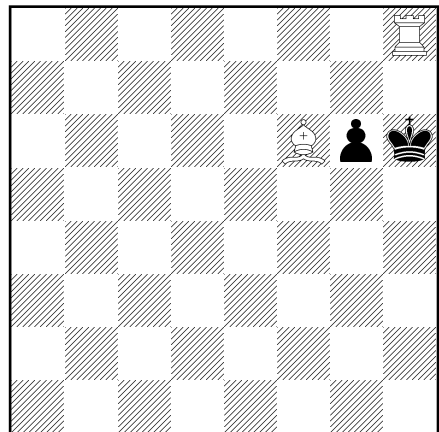
594



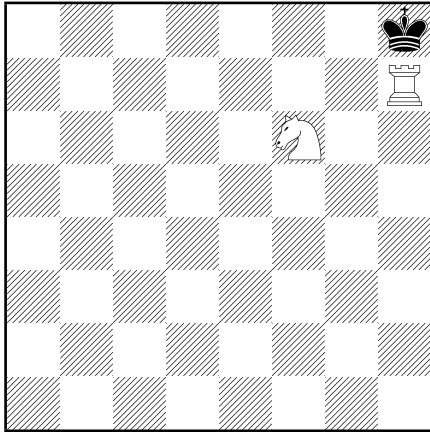
592



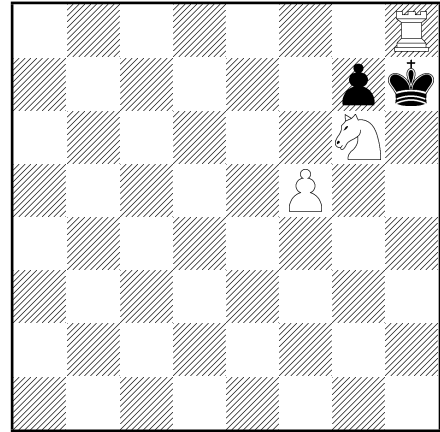
595



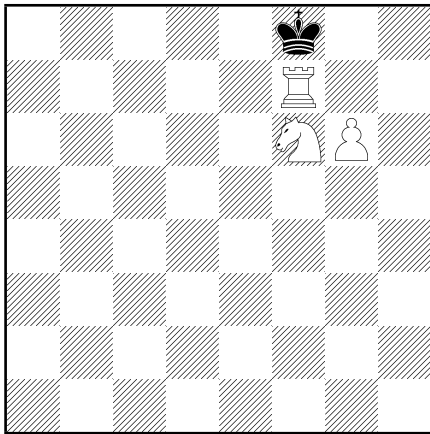
596



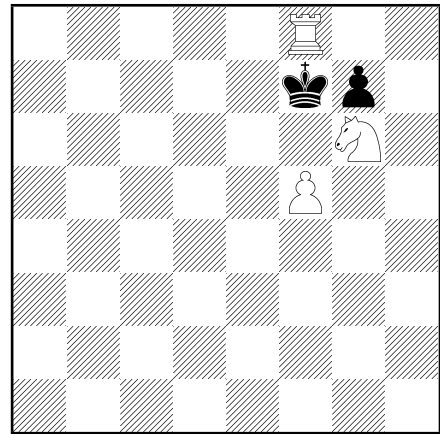
599



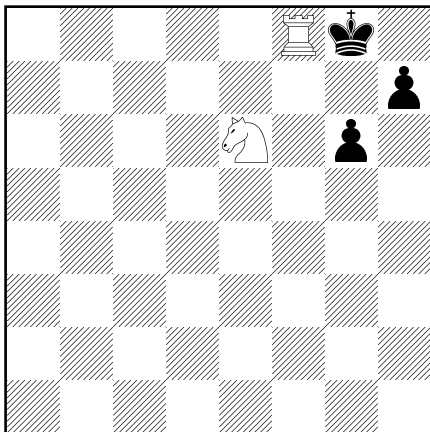
597



600



598



601

