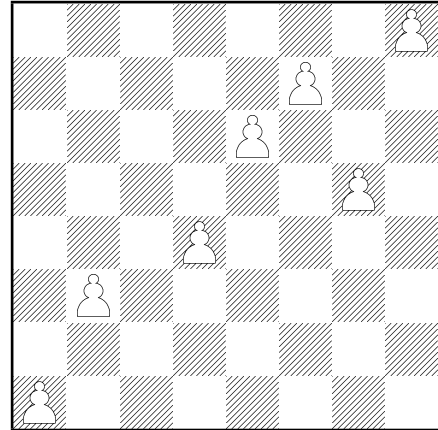
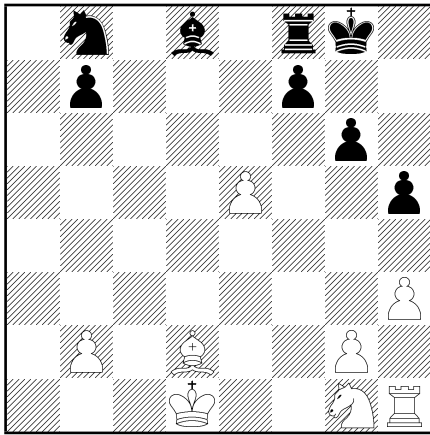


Comprehensive Chess Course,
 Volume II
 Lesson 2 Homework
 (Answers are in the book.)

I. Diagrams 66-73

67

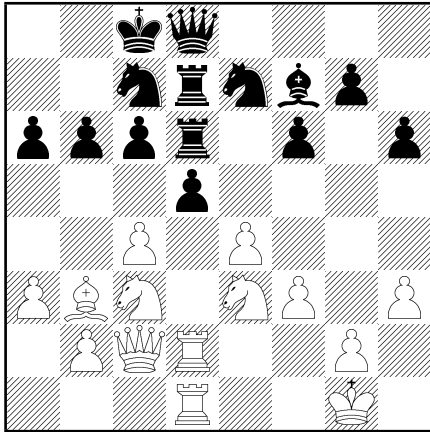
66



Black to play will pile up on the e5 pawn.
 Can white defend it?

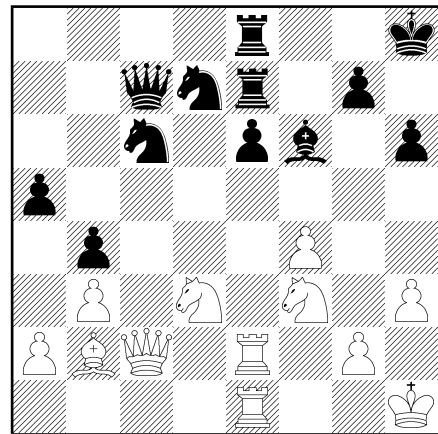
Name in order from lower left to upper right the squares occupied by the White pawns. First do it with the help of the letters and numbers printed on the edges of the diagram, then cover up the rank numbers on the left edge with a piece of paper and repeat the exercise, and finally cover up both rank numbers and letters indicating the files and do the exercise once more.

68



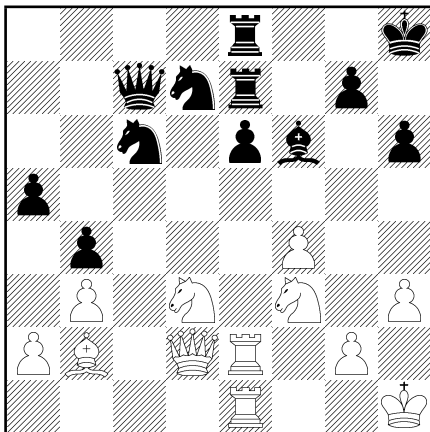
Can white to play win the pawn on d5?

70



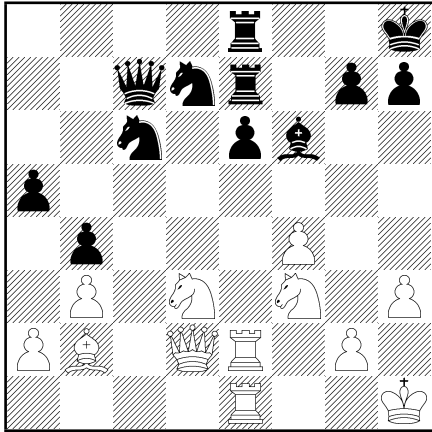
What is the difference between this position and Diagram 69? Is 1. ... e6-e5 a good move for Black in this changed position?

69

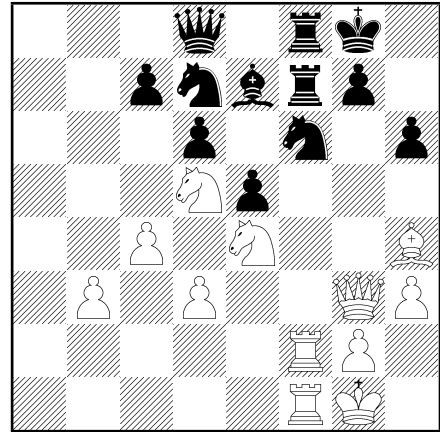


Will Black lose his e-pawn if he plays 1. ... e6-e5?

71



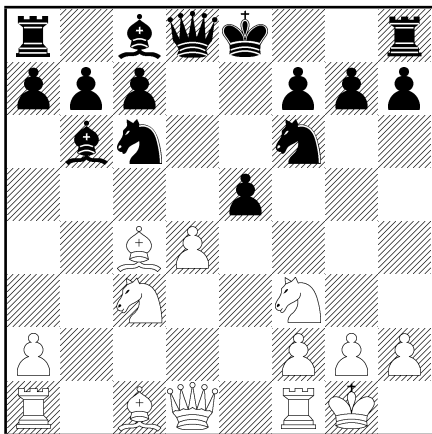
73



Same question as for Diagram 70.

Can White to play win material?

72



Can White to play hinder Black from castling?

II. Exercises

Write down your answers in the space below.

1. Change 1. bxc8N+ to full notation.

2. The White King is on g1 and there are White pawns on g2 and f2. Describe two different ways for King to get to f3 in three moves.

Try to answer the following questions without looking at a chessboard.

3. Name all the squares in a) the h1-a8 diagonal, and b) a1-h8 diagonal.

4. Name the diagonals running through the square b2. Which squares make up these diagonals?

5. At which square does the 2nd rank cross the c1-a3 diagonal?
