

Comprehensive Chess Course, Volume II

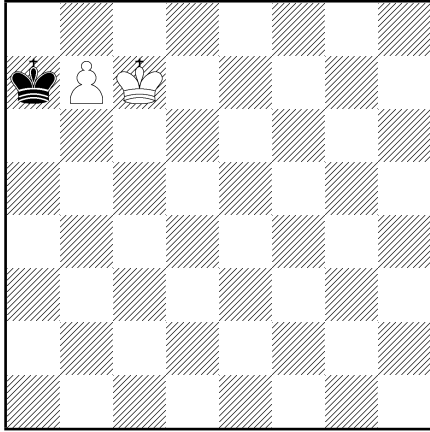
Lesson 5 Homework

(Answers are in the book.)

I. Diagrams 172-177

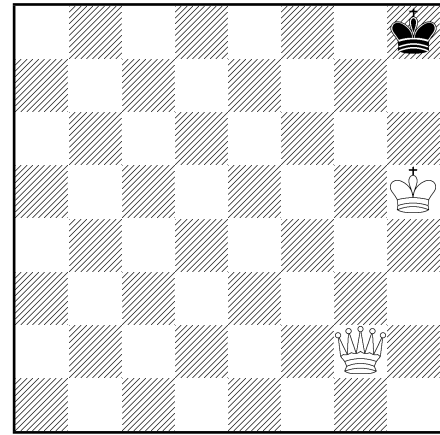
174

172



White to play. Mate in two moves.

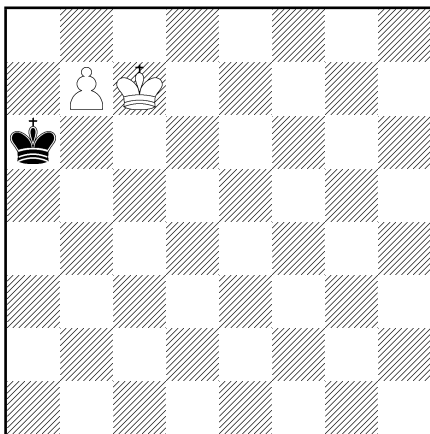
WHITE	BLACK
1.	
2.	



White to play. Mate in two moves.

WHITE	BLACK
1.	
2.	

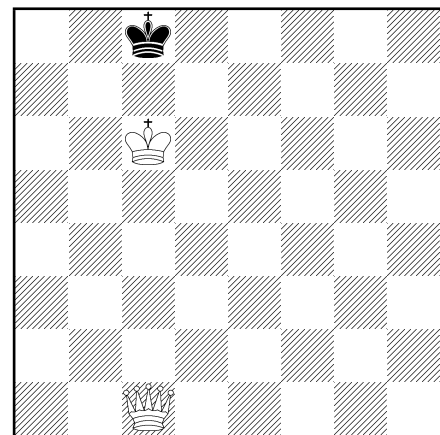
173



White to play. Mate in three moves.

WHITE	BLACK
1.	
2.	
3.	

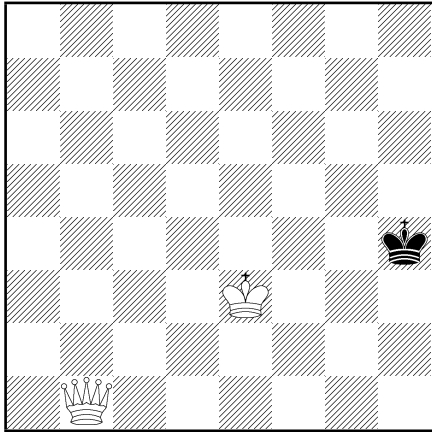
175



White to play. Mate in two moves.

WHITE	BLACK
1.	
2.	

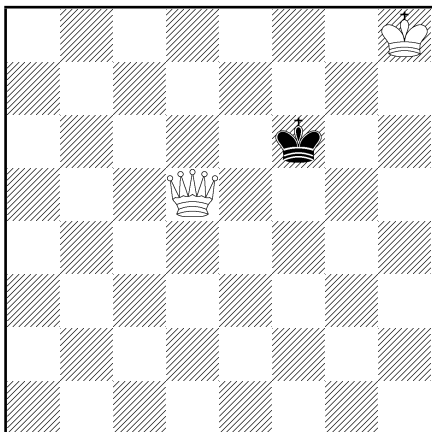
176



White to play. Mate in two moves.

WHITE	BLACK
1.	
2.	

177



White to play. Mate in four moves.

WHITE	BLACK
1.	
2.	
3.	
4.	

II. Exercises

Write down your answers in the space below.

1. Write down the position after the moves 1. e4 e5 2. Nf3 Nc6 3. Bc4 Nf6. First write down White's position, and then Black's. In giving the location of more than one man of the same kind, (e.g. pawns, bishops, etc) list them in order from the a-file to the h-file. If several men of the same kind are on the same file, then begin with the one on the lowest rank (i.e. the one nearest White's side.).

2. Set up several random arbitrary positions with King and Queen against King and practice mating until you can do it rapidly and confidently.

Try to answer questions 3 - 5 without looking at a board.

3. What color (light or dark) is f3?
4. At which square does the a3-f8 diagonal cross the d-file?
5. At which square does the h2-b8 diagonal cross the 4th rank?