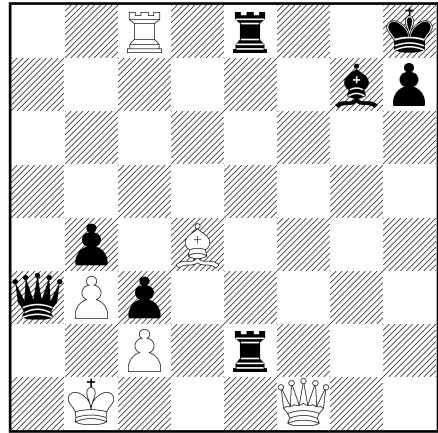


Comprehensive Chess Course, Volume II
 Lesson 12 Homework
 Test One

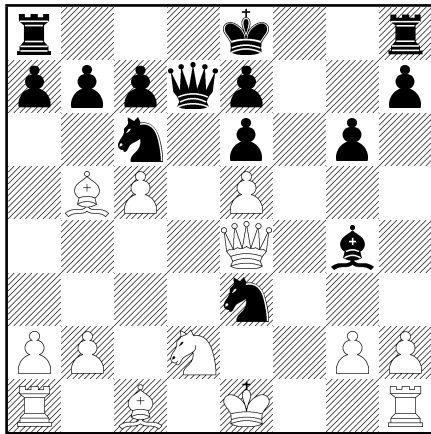
672

White to play and draw.

674



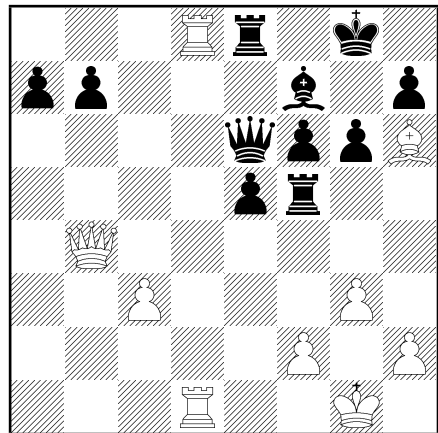
673



Black to play. Can he avoid losing a piece? How, or why not?

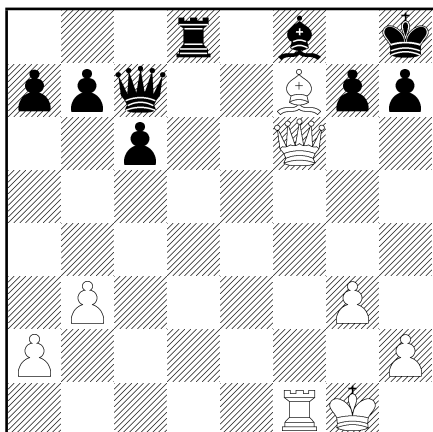
White to play and mate in two moves.

675



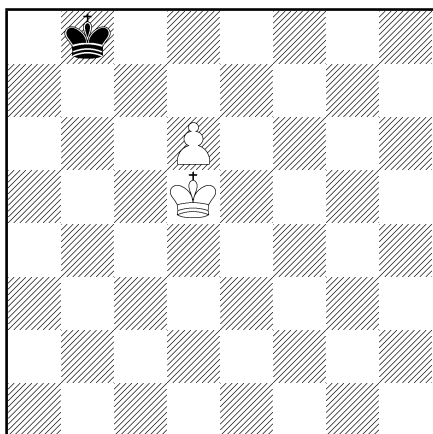
Black to play resigned. Why?

676



White to play. Find his strongest continuation.

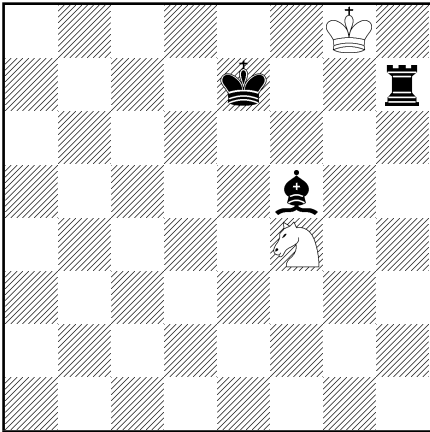
677



How does white queen his pawn if it is his turn to play? And if it is black's turn?

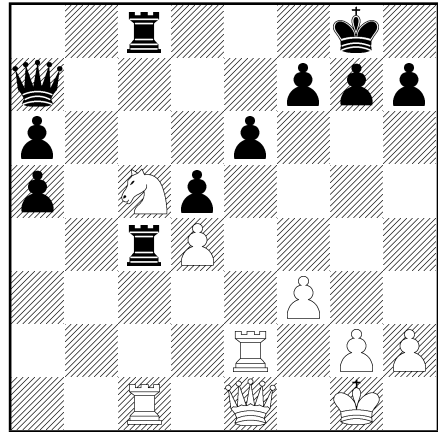
Test Two

678



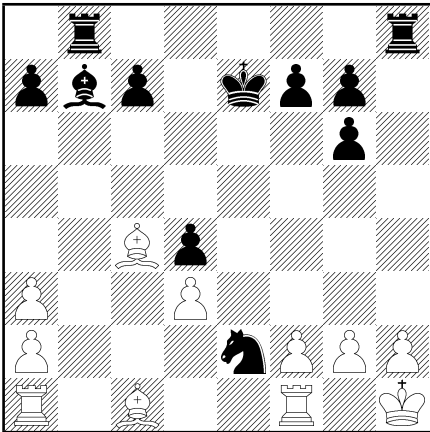
White to play and draw.

680



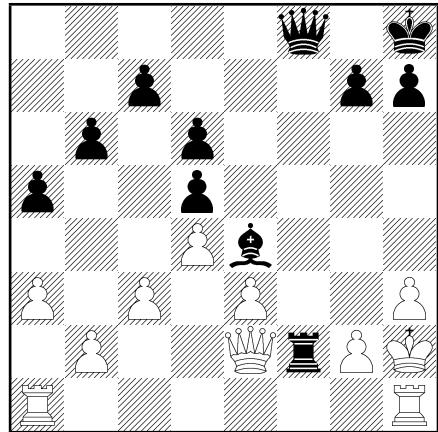
Black to play and win a piece.

679



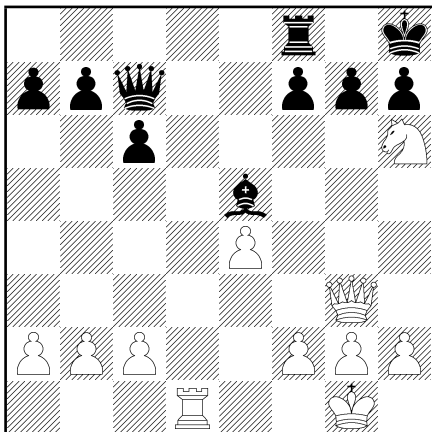
White to play. Why did he resign?

681



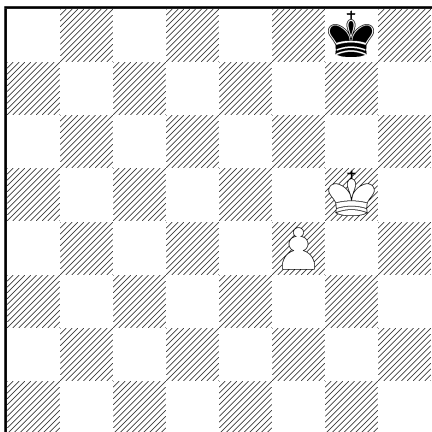
White to play. Find the strongest continuation.

682



White to play and win a piece.

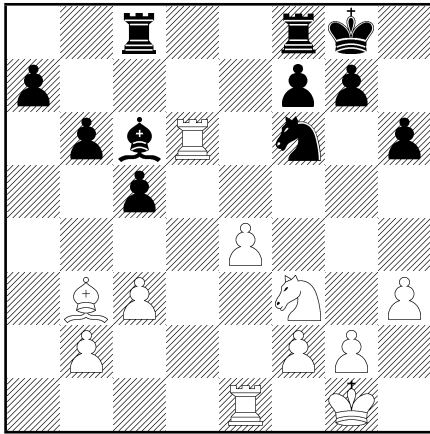
683



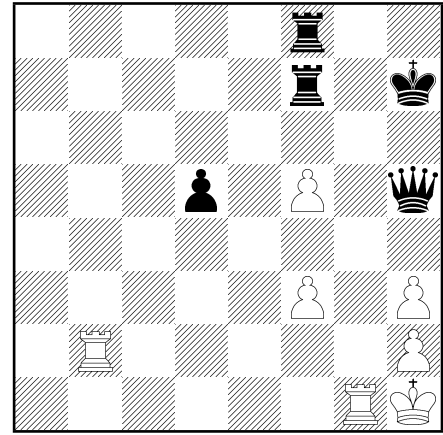
White to play and queen his pawn. Can black save himself if it is his move?

Test Three

684

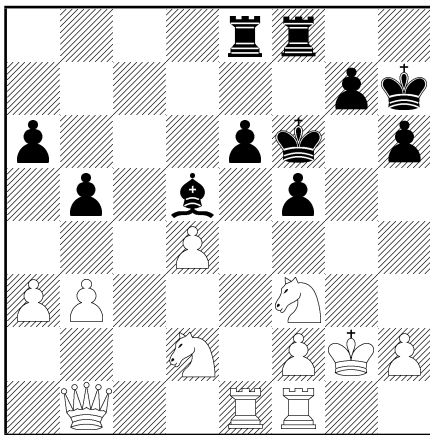


Black to play. Can he win the pawn on e4?



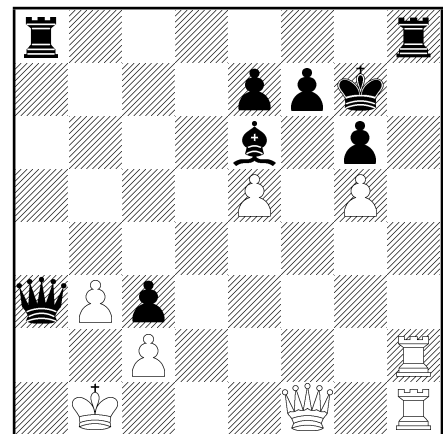
White to play and win a piece.

685



Black to play and win a piece.

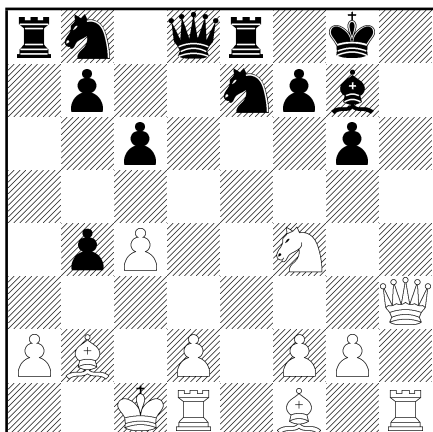
687



White to play and mate in three moves.

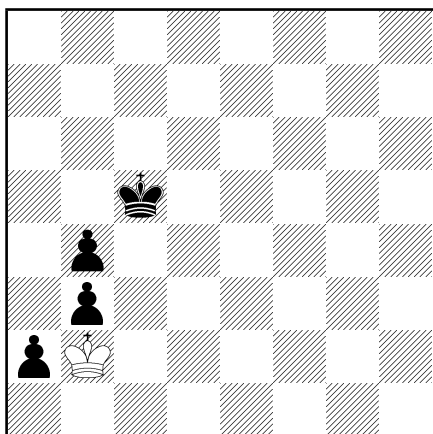
686

688



Is ... Bg7xd4 a good move?

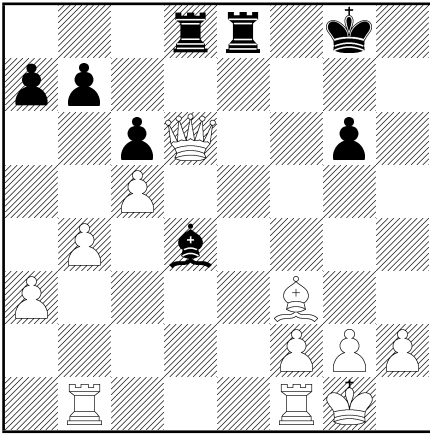
689



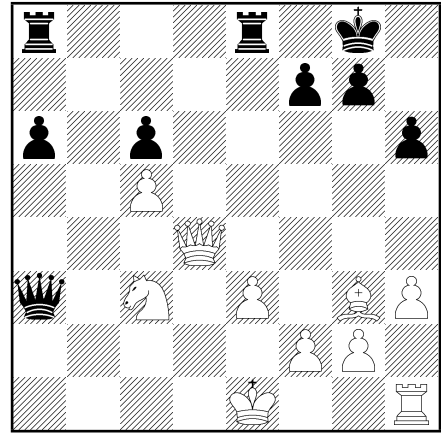
Black to play and queen a pawn.

Test Four

690

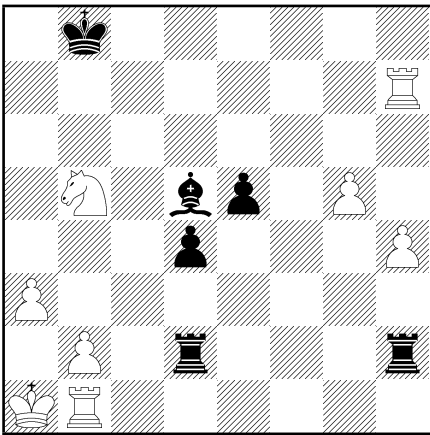


White to play and win a piece.



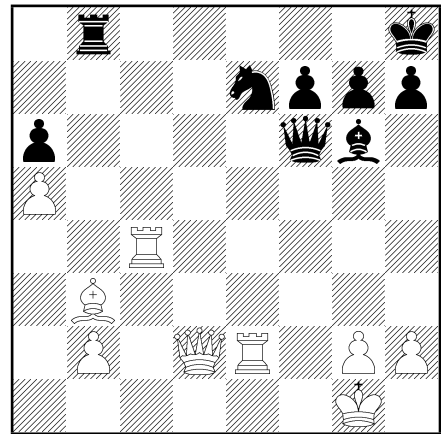
Black to play and win a piece.

691



Is ... Bd5-e4 (double attack) a good move?

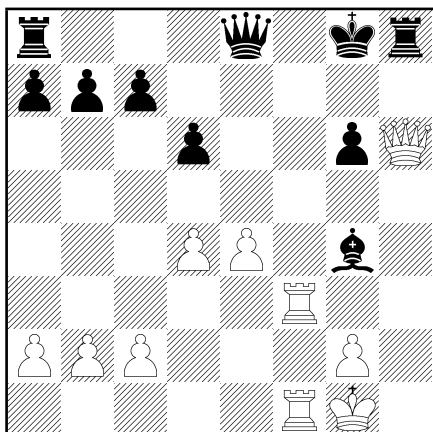
693



White to play. Find the strongest continuation.

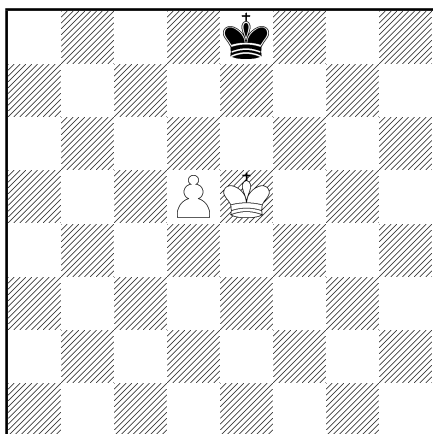
692

694



White to play and mate in three moves.

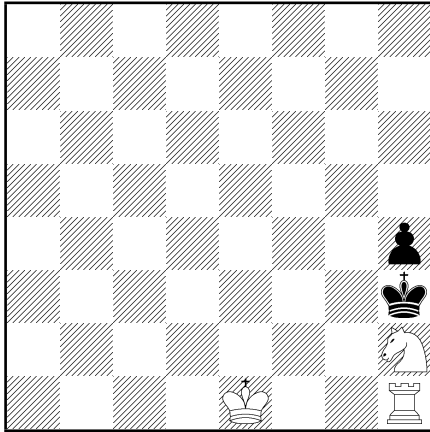
695



White to play and queen his pawn. Can Black save himself if it is his turn to play?

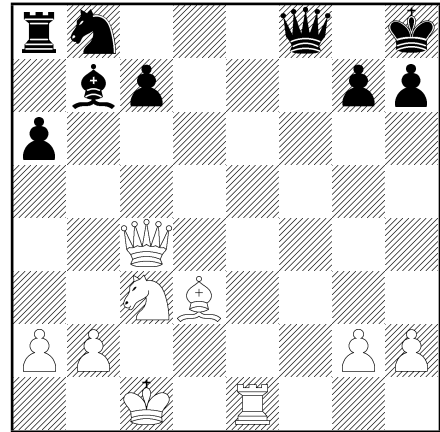
Test Five

696



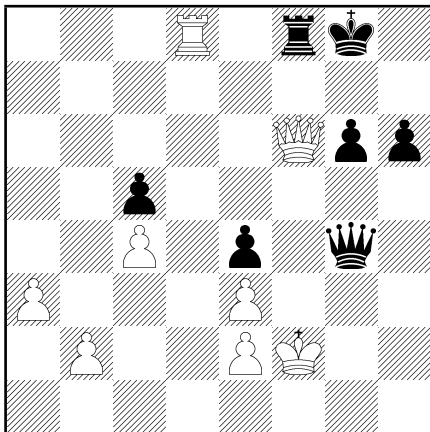
White to play and mate in two moves. (The White King and Rook have not moved in the game so far.)

698



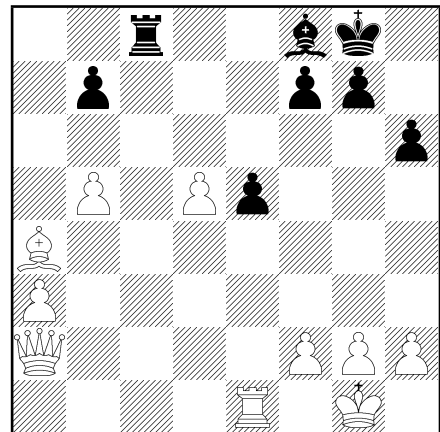
White to play and win a piece.

697



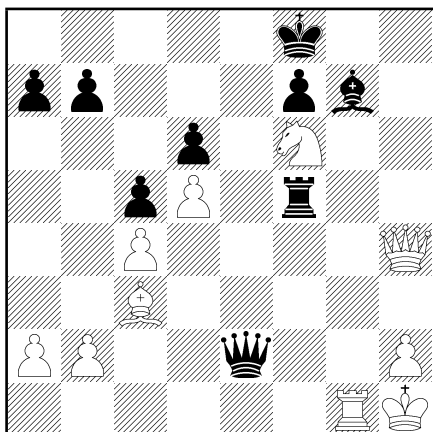
Black to play and win a piece.

699



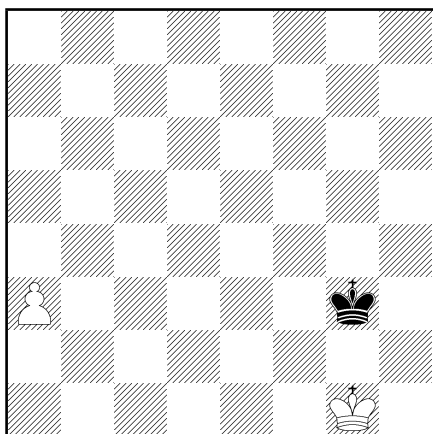
Black to play and win a piece.

700



White to play and mate in three moves.

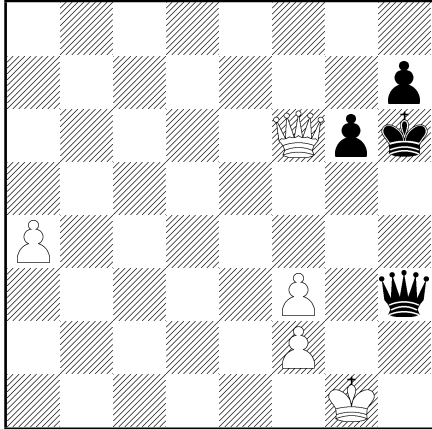
701



White to play. Can he Queen his pawn? Can Black stop the pawn if it is his turn to play?

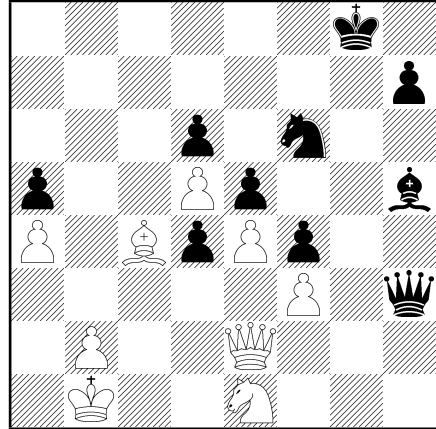
Test Six

702



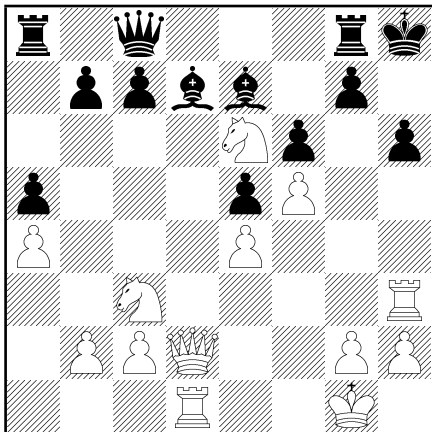
Black to play. What is his strongest continuation?

704



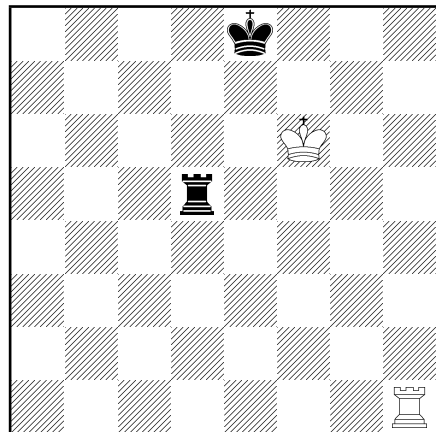
Black to play and win a pawn.

703



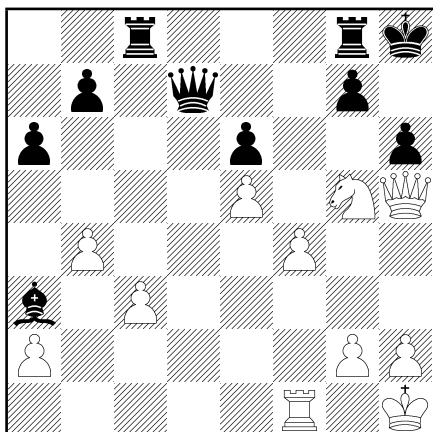
Black to play. Why did he resign?

705



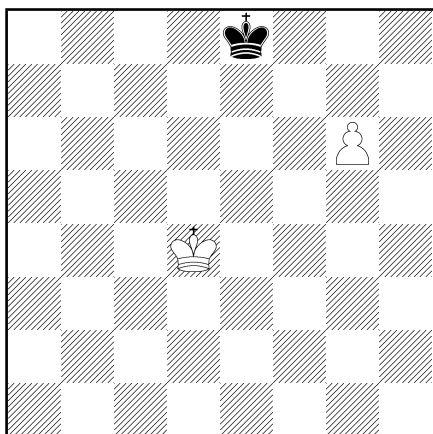
White to play and win a Rook.

706



White to play and mate in two moves.

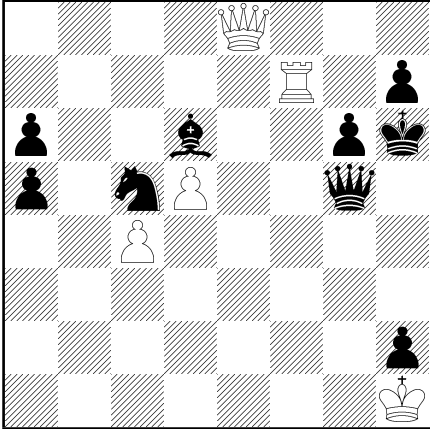
707



White to play and queen his pawn.

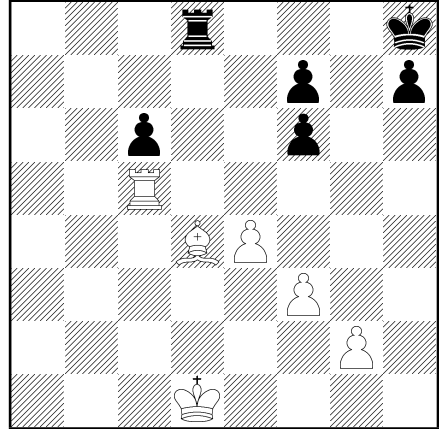
Test Seven

708



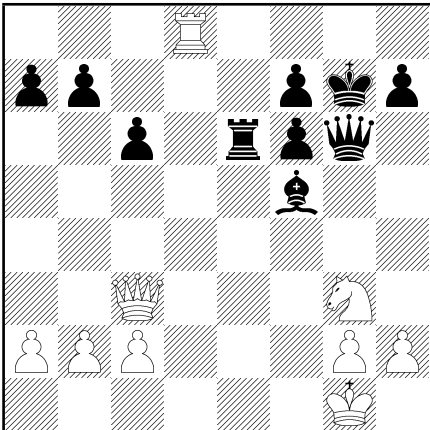
White to play and draw.

710



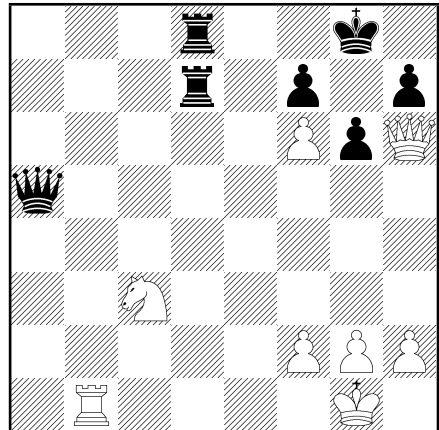
White to play. How can he avoid losing a piece?

709



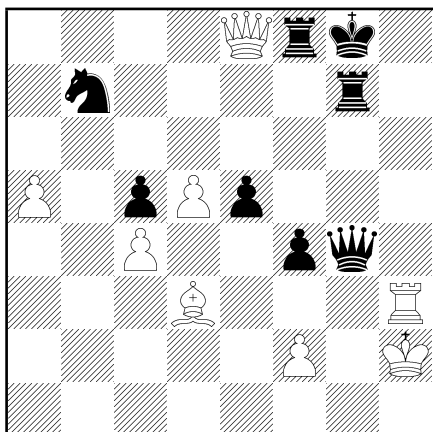
White to play and win a piece.

711



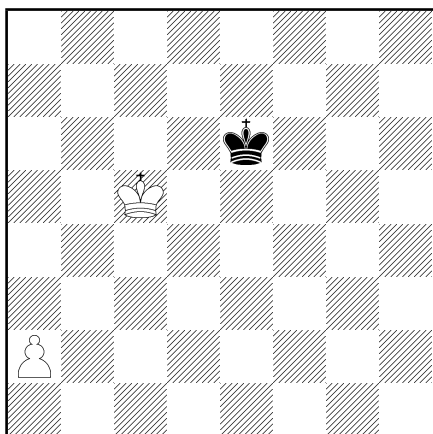
Black to play and mate in three moves.

712



White to play and mate in three moves.

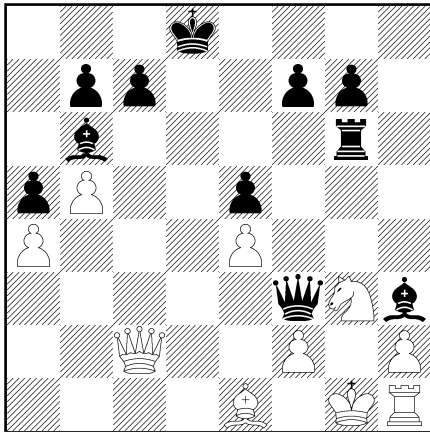
713



White to play and queen his pawn. Black to play and draw.

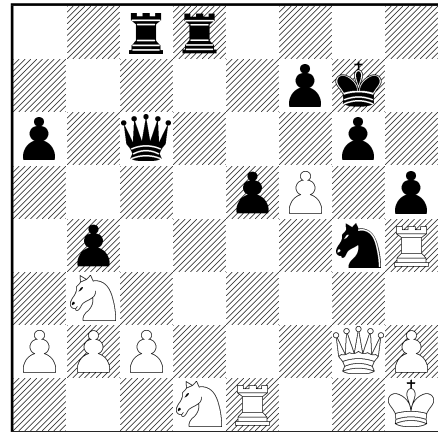
Test Eight

714



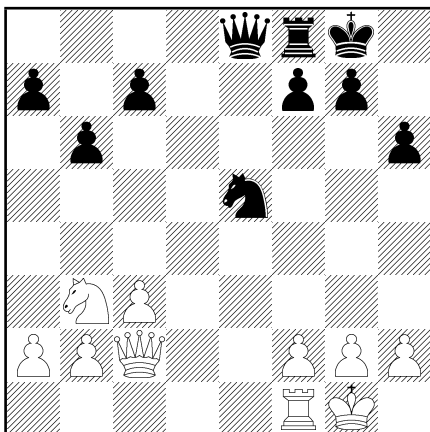
White to play and draw.

716



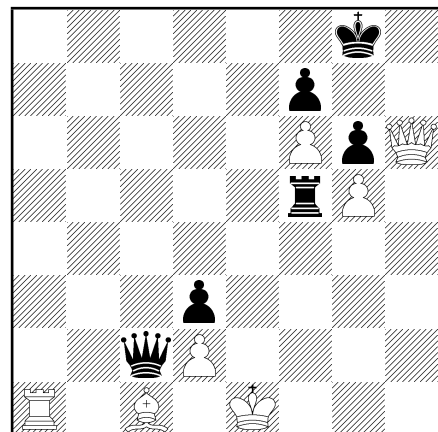
Black to play and win a piece.

715



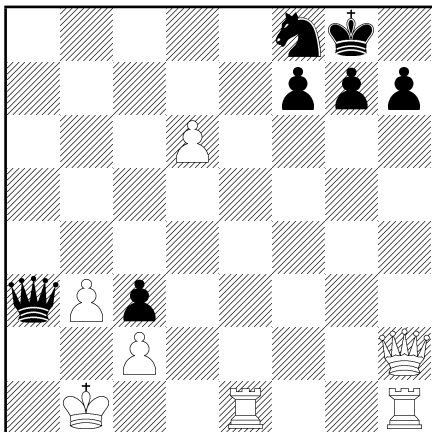
Is 1. Rf1-e1 a good move?

717



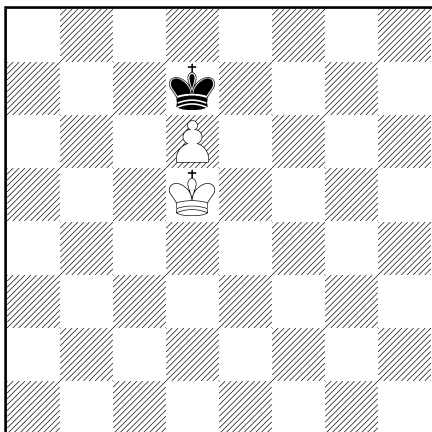
Black to play and mate in two moves.

718



White to play and mate in four moves.

719



Show that the result should be a draw no matter who moves first.
