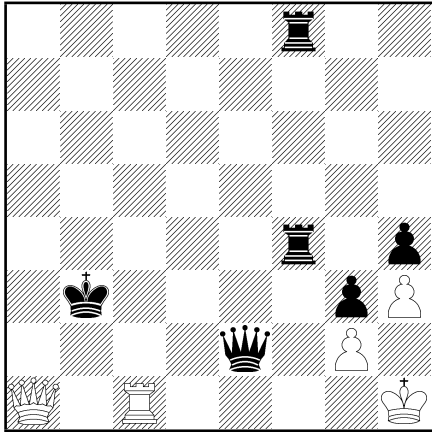


**Comprehensive Chess Course,
Volume II
Lesson 3 Homework
(Answers are in the book.)**

I. Diagrams 107-112

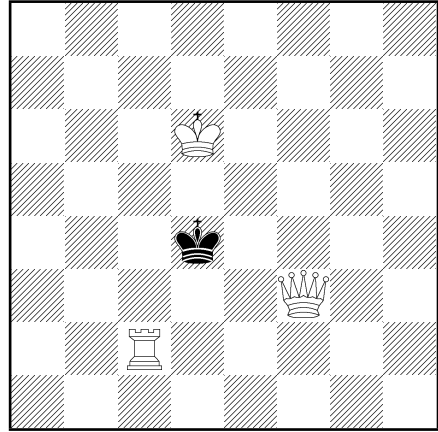
107



White to play and mate in six moves.

WHITE	BLACK
1.	
2.	
3.	
4.	
5.	
6.	

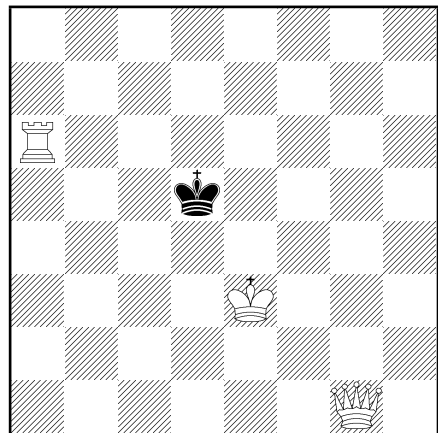
108



White to play and mate in two moves.

WHITE	BLACK
1.	
2.	

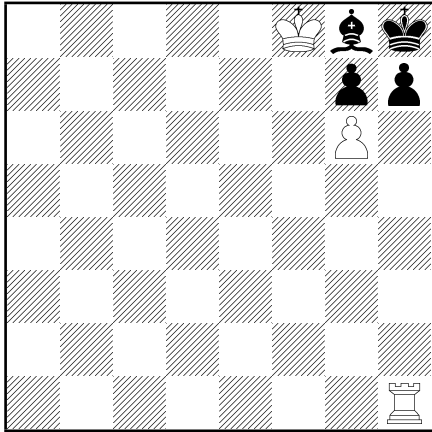
109



White to play and mate in two moves.

WHITE	BLACK
1.	
2.	

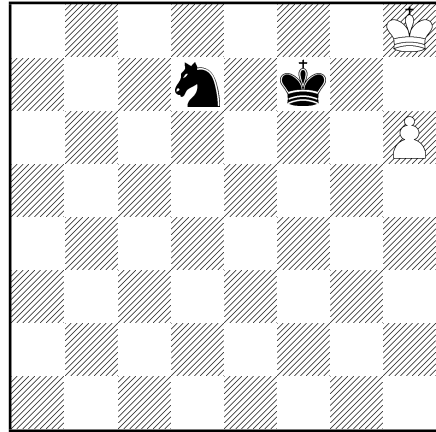
110



White to play and mate in two moves.

WHITE	BLACK
1.	
2.	

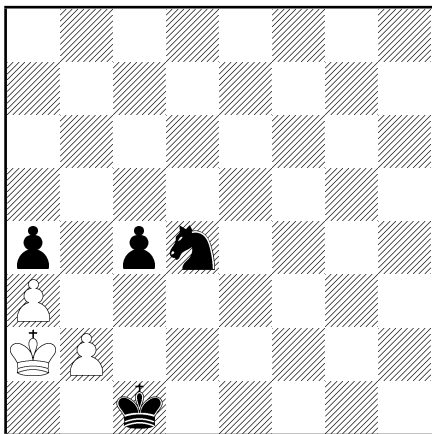
112



Black to play and mate in two moves.

WHITE	BLACK
1.	
2.	

111



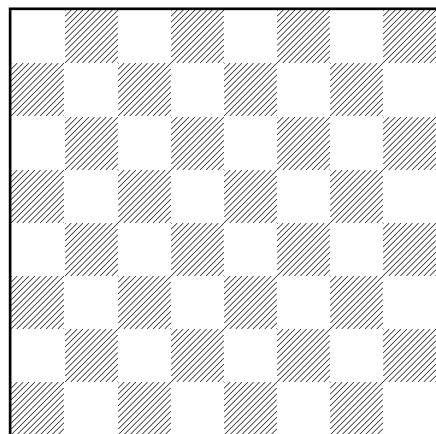
Black to play and mate in two moves.

WHITE	BLACK
1.	
2.	

II. Board Study Exercises

Write down your answers in the space below.

- Place eight Queens of the same color on the board in such a way that none of them defends any of the others.



2. Find any one of the paths in which a Black King on f8 can reach a4 in the shortest number of moves.

3. Suppose you are playing Black. Name the square where the fourth row (counting from your side) crosses the fourth file (counting from your left).

4. Write down any one of the paths in which a Knight on a8 can reach b7 in the shortest number of moves.

5. Record one of your games in full algebraic notation and then play it over to check if you recorded it correctly.

SCORESHEET

Date: _____

White: _____

Black: _____

WHITE	BLACK	WHITE	BLACK
1.		21.	
2.		22.	
3.		23.	
4.		24.	
5.		25.	
6.		26.	
7.		27.	
8.		28.	
9.		29.	
10.		30.	
11.		31.	
12.		32.	
13.		33.	
14.		34.	
15.		35.	
16.		36.	
17.		37.	
18.		38.	
19.		39.	
20.		40.	