

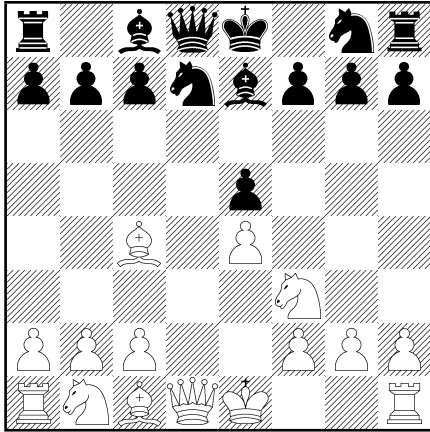
Comprehensive Chess Course, Volume II

Lesson 4 Homework

(Answers are in the book.)

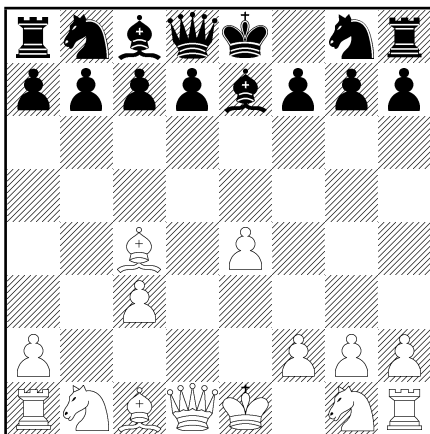
I. Diagrams 137-142

137



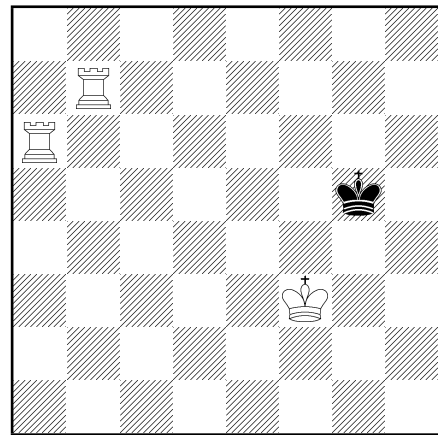
White to play. Find the best move.

138



White to play. Find the best move.

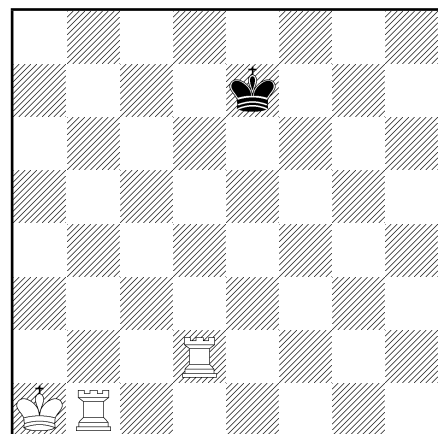
139



White to play. Mate in two moves. Find two solutions.

WHITE	BLACK
1.	
2.	
WHITE	BLACK
1.	
2.	

140

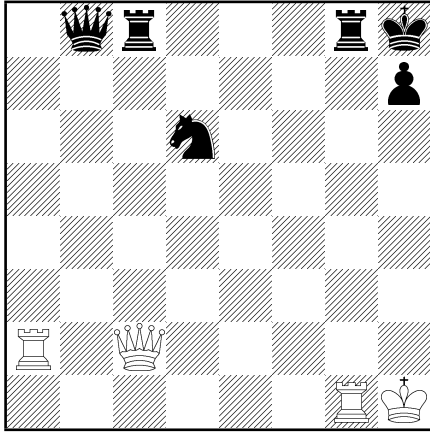


White to play. Mate in four moves. Find two methods.

WHITE	BLACK
1.	
2.	
3.	
4.	

WHITE	BLACK
1.	
2.	
3.	
4.	

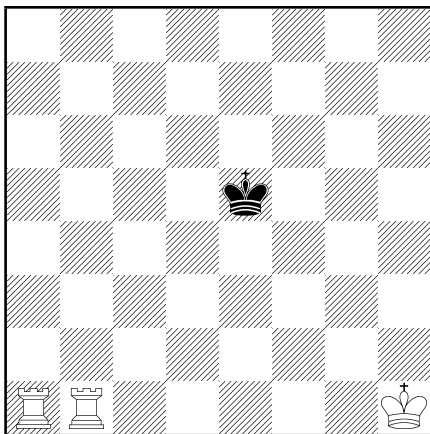
141



White to play. Mate in two moves.

WHITE	BLACK
1.	
2.	

142



White to play. How many moves are needed to checkmate black? What are these moves?

WHITE	BLACK

II. Exercises

Write down your answers in the space below.

Try to answer questions 1 - 3 without looking at a board.

1. Can a position with White pawns on a2, a3, and b2 occur in a game?

2. How many moves will it take a Black Knight on c7 to capture a white pawn on e7?

3. Name the diagonals running through e4. Which squares make up those diagonals?

4. Set up several random positions with a King and two Rooks or a King, Queen, and Rook against a lone King and practice checkmating the King until you can do it quickly and confidently.

5. Record one of your games in abbreviated notation and then play it over to check if you recorded it correctly.