

Comprehensive Chess Course, Volume II

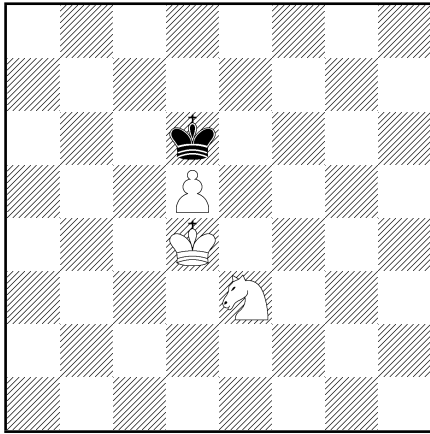
Lesson 6 Homework

(Answers are in the book.)

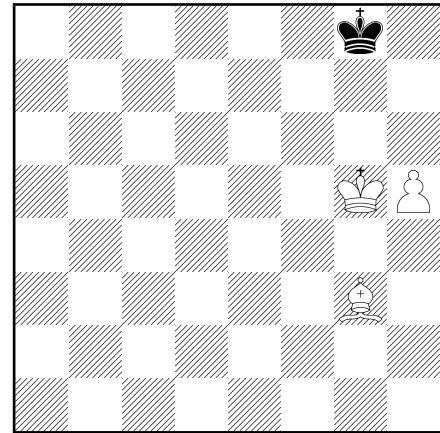
I. Diagrams 209-214

211

209

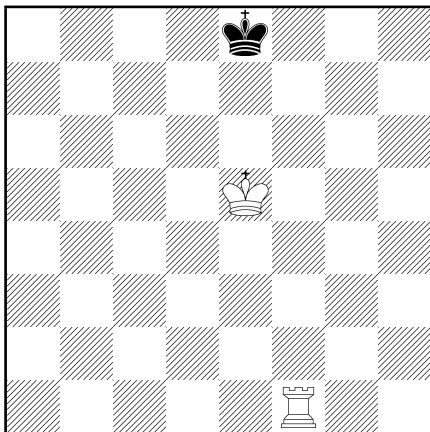


White to play and win. (Write down the plan.)



White to play and win. Write the plan and a possible sequence of moves to execute your plan.

210

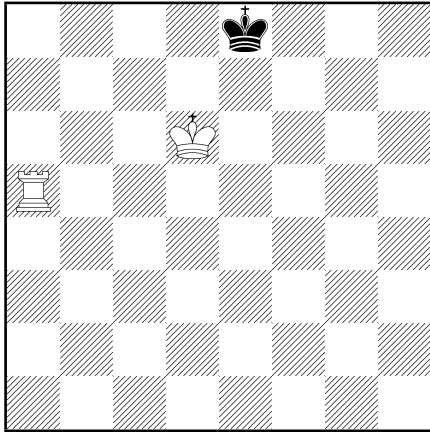


White to play. Mate in two moves.

WHITE	BLACK
1.	
2.	

WHITE	BLACK
1.	
2.	
3.	
4.	
5.	

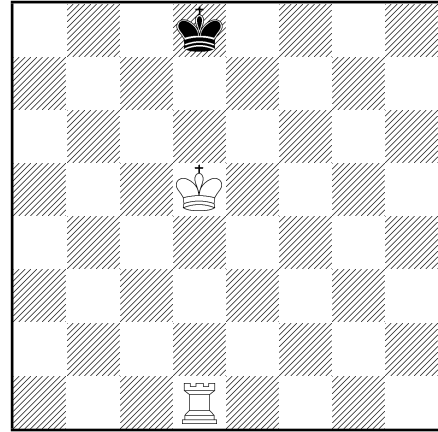
212



White to play. Mate in two moves.

WHITE	BLACK
1.	
2.	

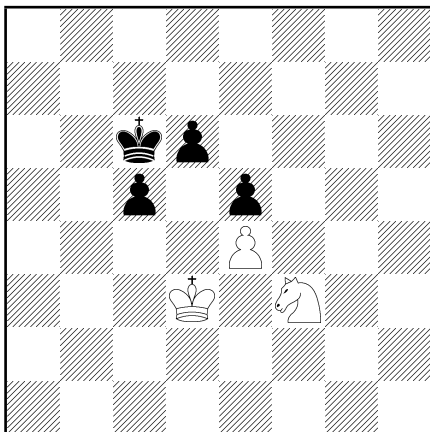
214



White to play. Mate in three moves.

WHITE	BLACK
1.	
2.	
3.	

213



White to play and win. Write down your plan and play it against your teacher.

II. Exercises

Try to answer questions 1 - 3 without looking at a chess board.

1. Write down the locations of all the pieces in the starting position.

2. Which lines (rank, file, and diagonals) run through e5?

3. What color (light or dark) is e6?

4. Set up some random positions with King and Rook against King and practice mating until you can do it quickly and confidently.

5. Think up a position in which Black to play can mate in two moves.