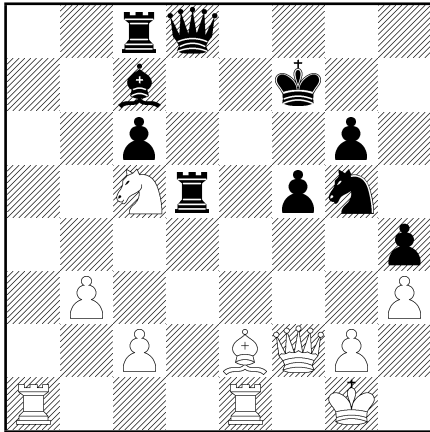


Comprehensive Chess Course, Volume II
Lesson 8 Homework
 (Answers are in the book.)

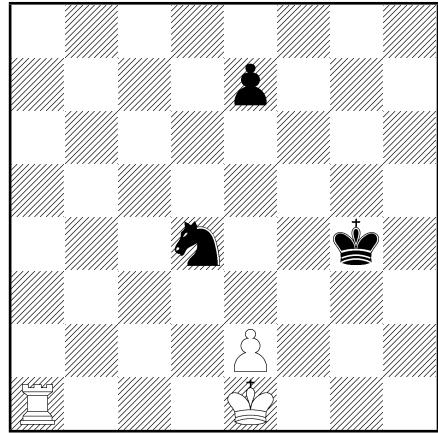
I. Use the tactical device of "pinning" in the solutions to Diagrams 315 - 320.

315



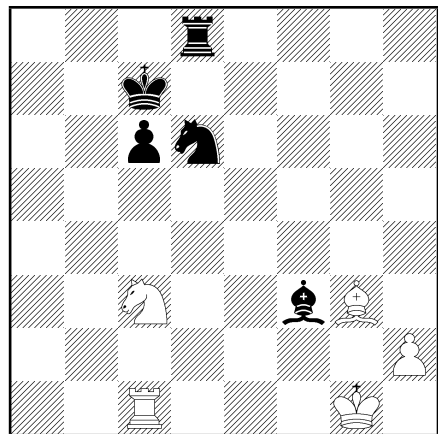
Find all the possible pins both with White to play and with Black to play.

316



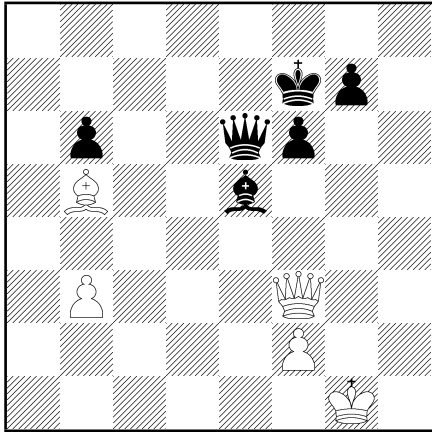
White to play. How can he win the Black Knight?

317



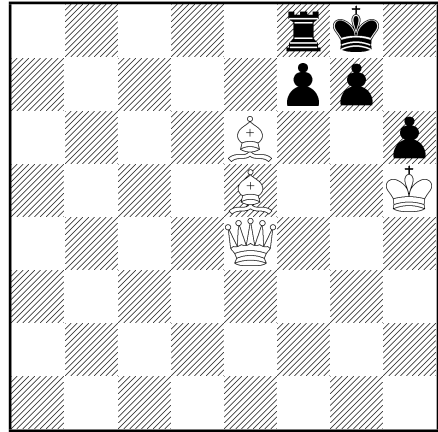
White to play. How can he win the Black Knight?

318



White to play. Find the best move.

320

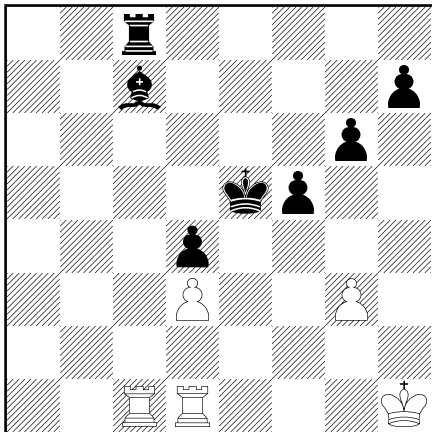


White to play and mate in two moves.

WHITE	BLACK
1.	
2.	

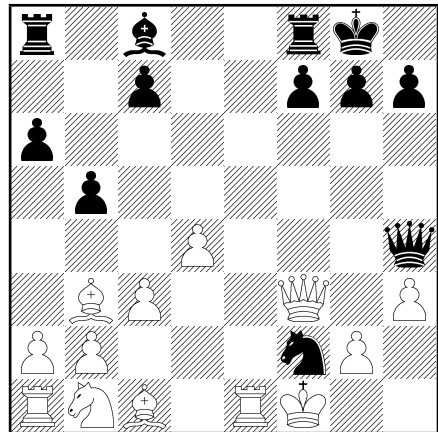
II. Diagrams 321 - 326. In each position find a combination based on the tactical device of "pinning."

319



White to play and win a piece.

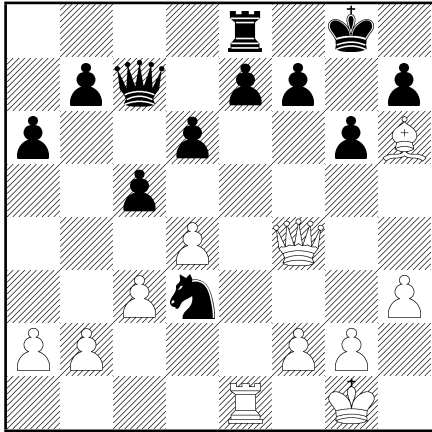
321



White to play and mate in two moves.

WHITE	BLACK
1.	
2.	

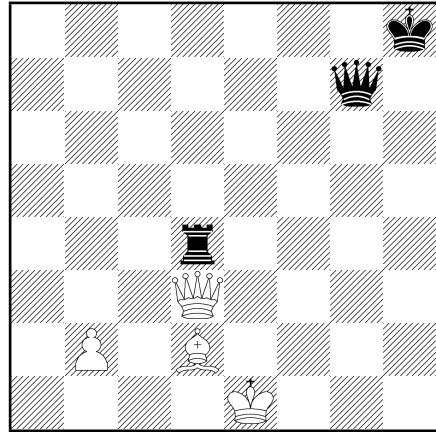
322



White to play and mate in two moves.

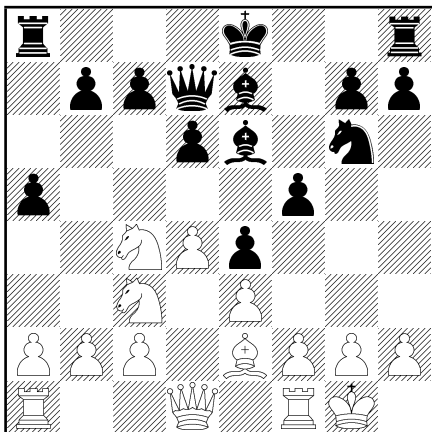
WHITE	BLACK
1.	
2.	

324



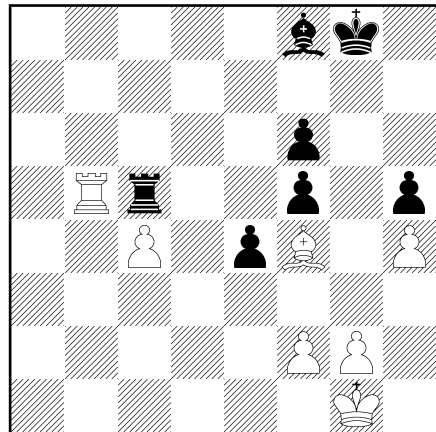
White to play. How can he win the exchange?

323



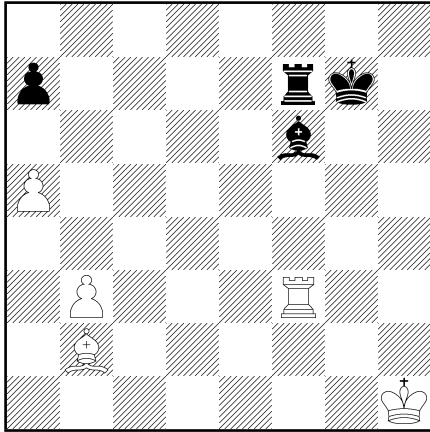
White to play. How can he win the exchange?

325



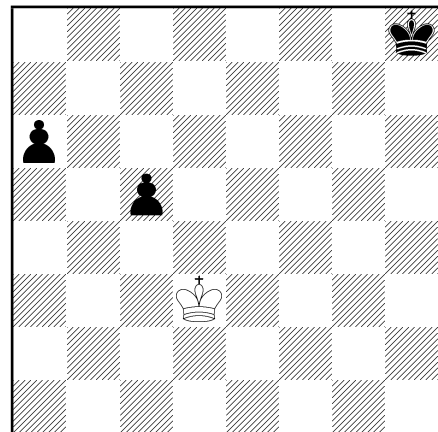
White to play and win a piece.

326



White to play and win.

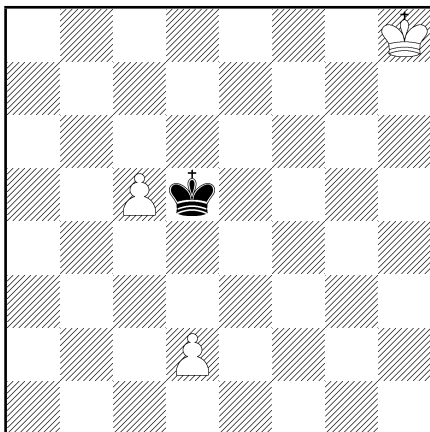
328



Can Black win if it is his turn to play? And if it is White's turn?

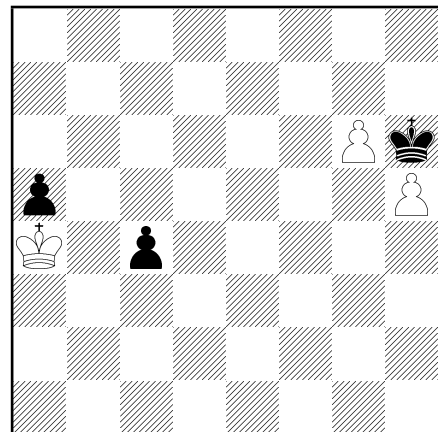
III. In Diagrams 327 - 332 use the "rule of the square of the pawn" to find the solutions.

327



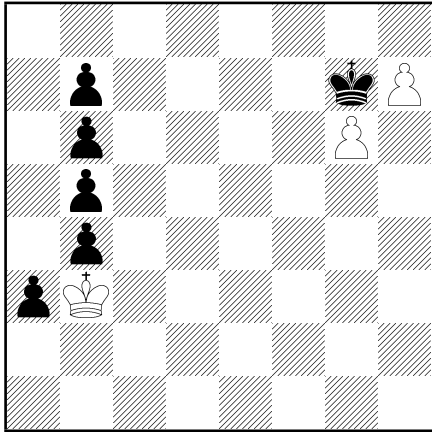
How should the game end with White to play?
With Black to play?

329



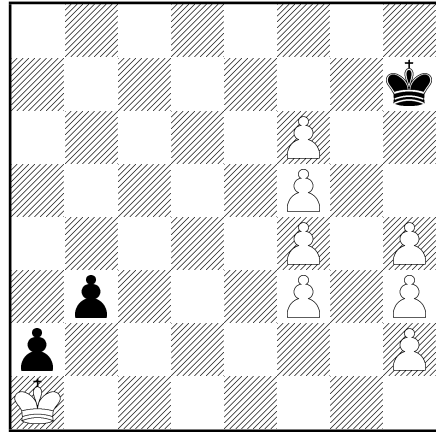
Find the draw both with White to play and with Black to play.

330



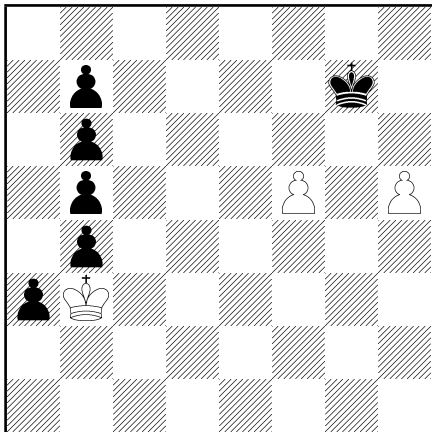
Is it possible for this position to occur? How should the game end (whether it is White or Black to play)?

332



Is it possible for this position to occur? Find the draw both with White to play and with Black to play.

331



Find the draw both with White to play and with Black to play.
